



LEGEND

- DEMOUNTABLE RELOCATION PRIOR TO DEMOLITION WORKS
- DEMOLISHED STRUCTURES - STAGE 1 INCLUDING SERVICES
- DEMOLISHED STRUCTURES - STAGE 2 INCLUDING SERVICES
- RELOCATE SPORT COURT

PRELIMINARY

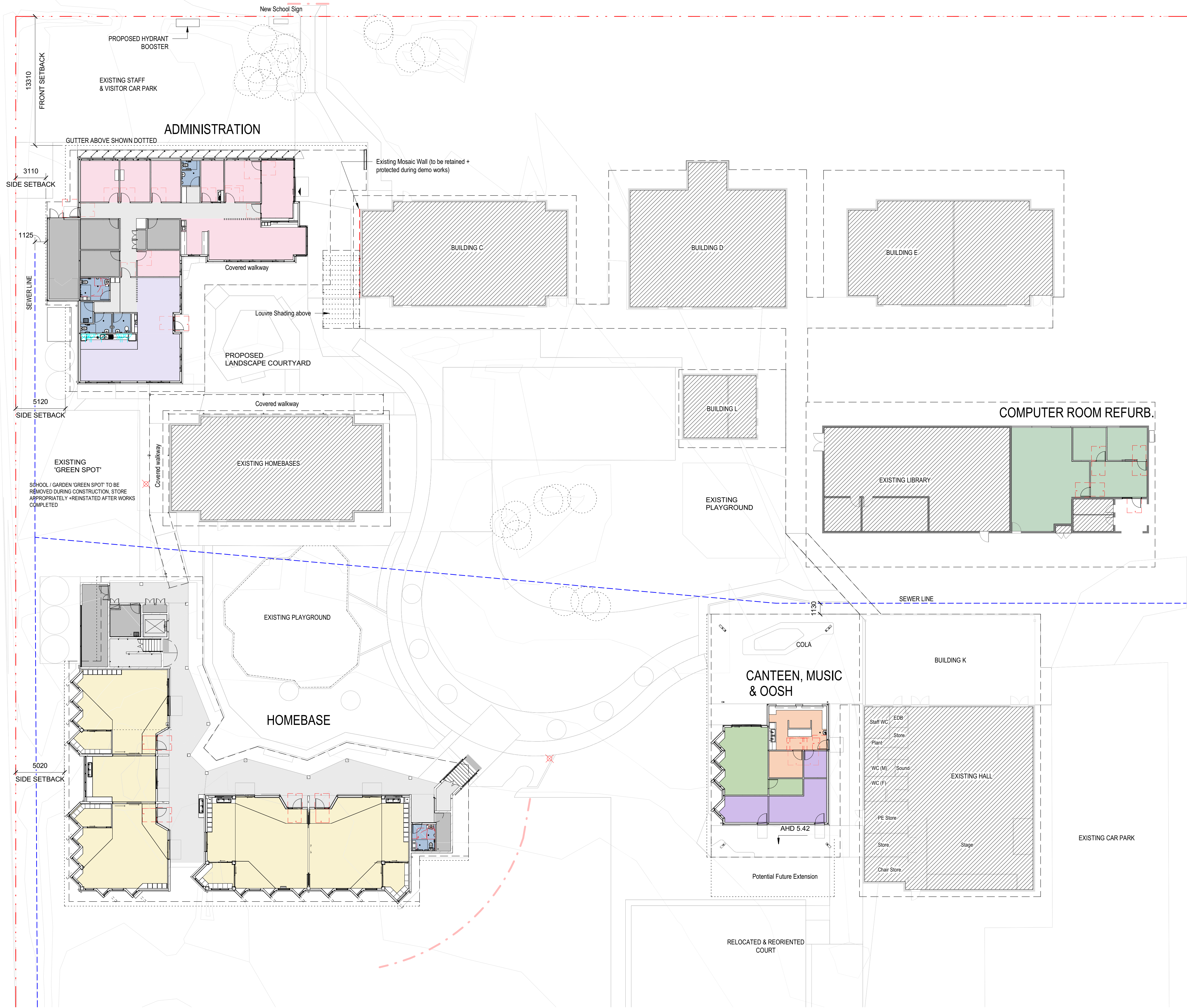


GROSS FLOOR AREA CALCULATION	
Homebase (Ground):	407 sqm
Homebase (Level 1):	405 sqm
Admin:	339 sqm
Canteen, Music & OOSH:	116 sqm
Total:	1,267 sqm

PRELIMINARY

COLOR LEGEND

- Admin
- Amenities
- Canteen
- Circulation
- Existing Library
- Homebase
- OOSH
- Services
- Special program
- Staff
- Calculating...



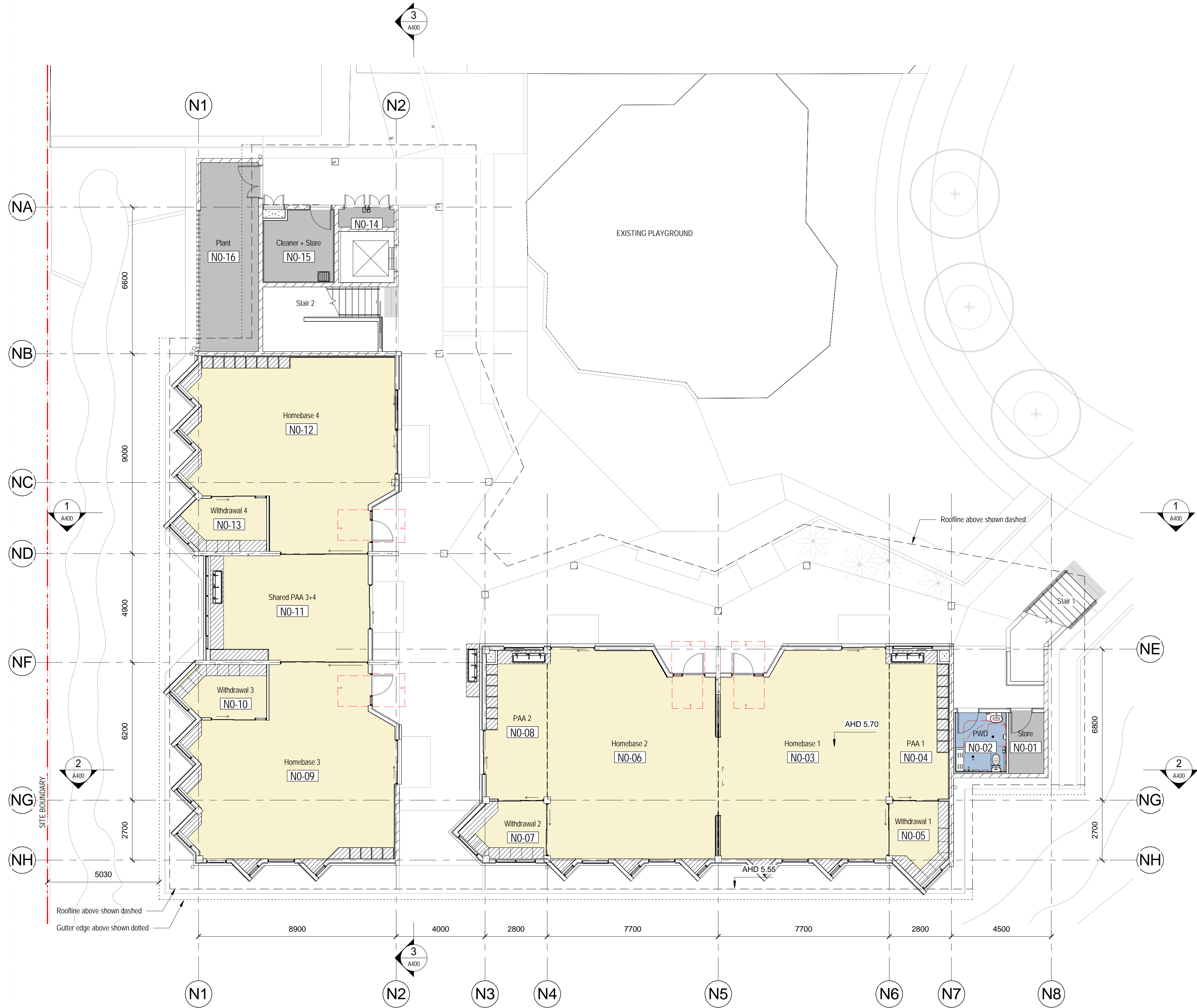
PRELIMINARY



PRELIMINARY

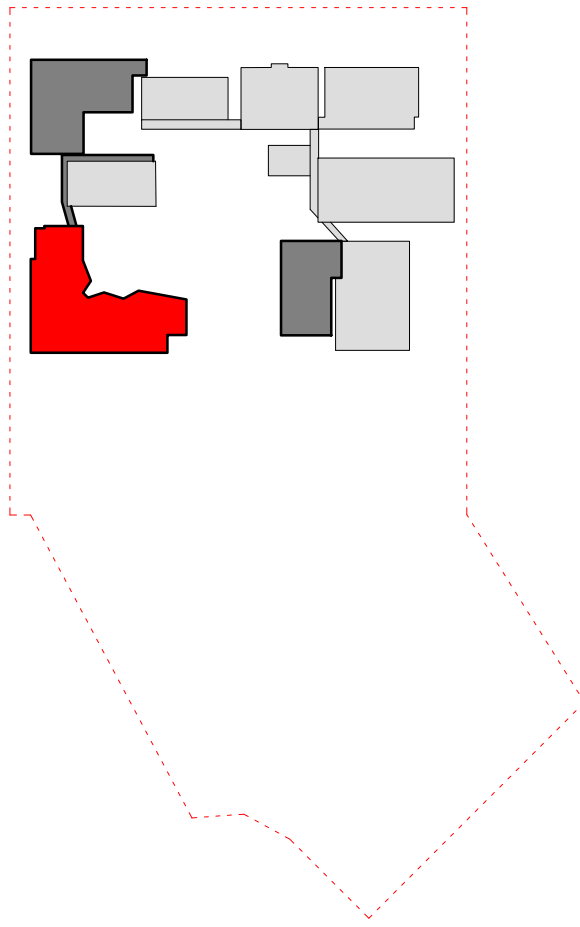
COLOR LEGEND

- Amenities
- Homebase
- Services



GROSS FLOOR AREA CALCULATION

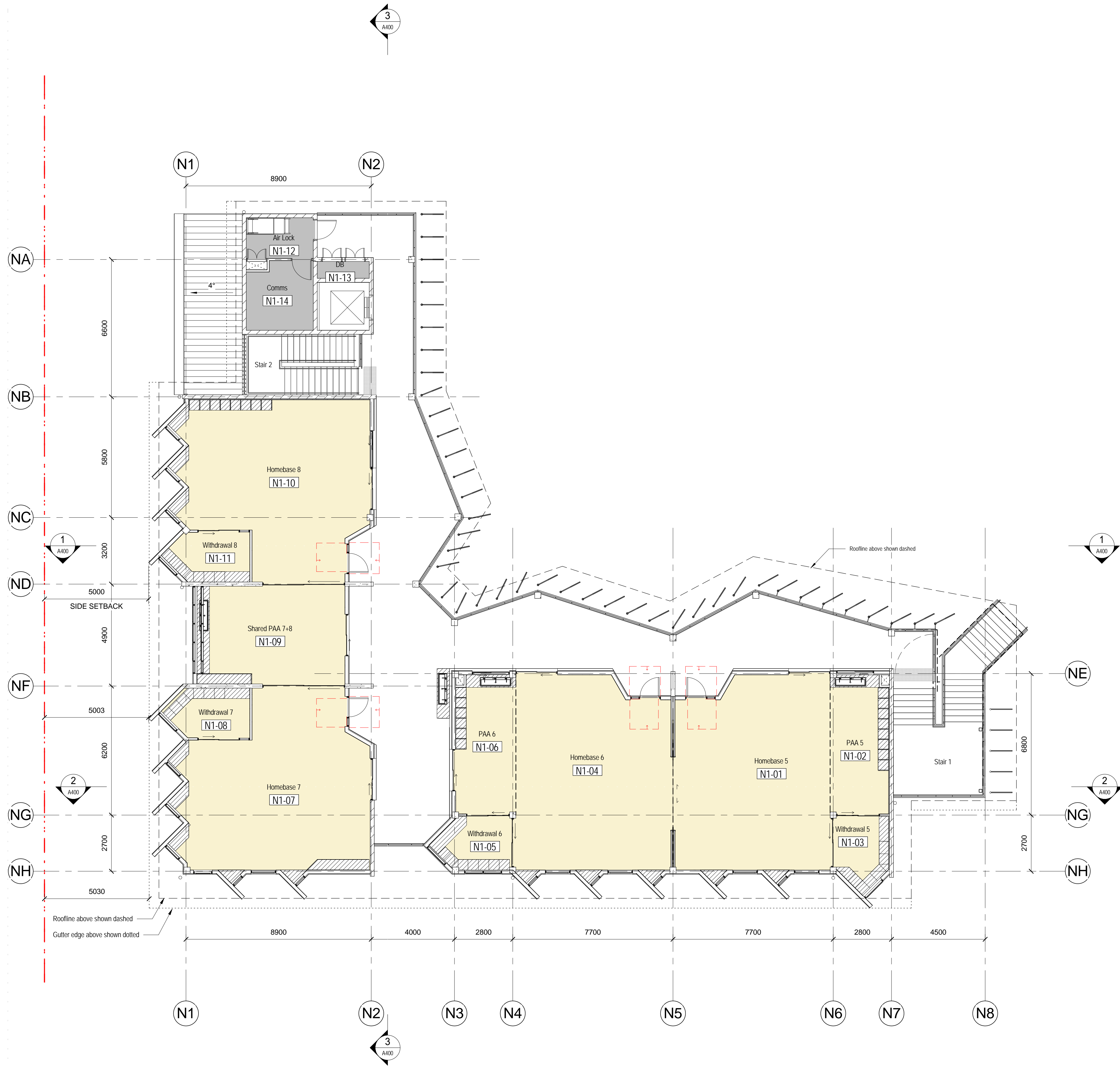
Homebase (Ground):	407 sqm
Homebase (Level 1):	405 sqm
Admin:	339 sqm
Canteen, Music & OOSH:	116 sqm
Total:	1,267 sqm



PRELIMINARY

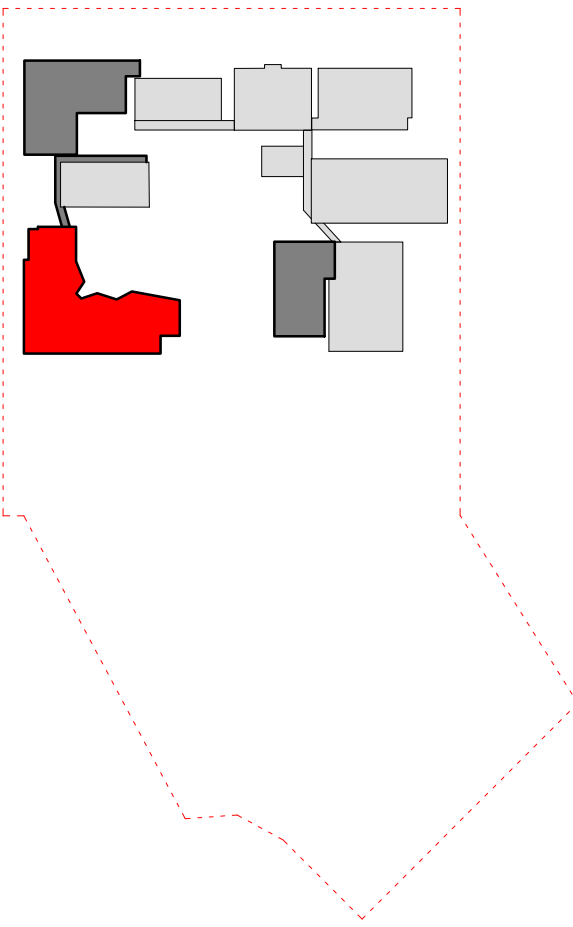
COLOR LEGEND

- Homebase
- Services



GROSS FLOOR AREA CALCULATION

Homebase (Ground):	407 sqm
Homebase (Level 1):	405 sqm
Admin:	339 sqm
Canteen, Music & OOSH:	116 sqm
Total:	1,267 sqm



PRELIMINARY

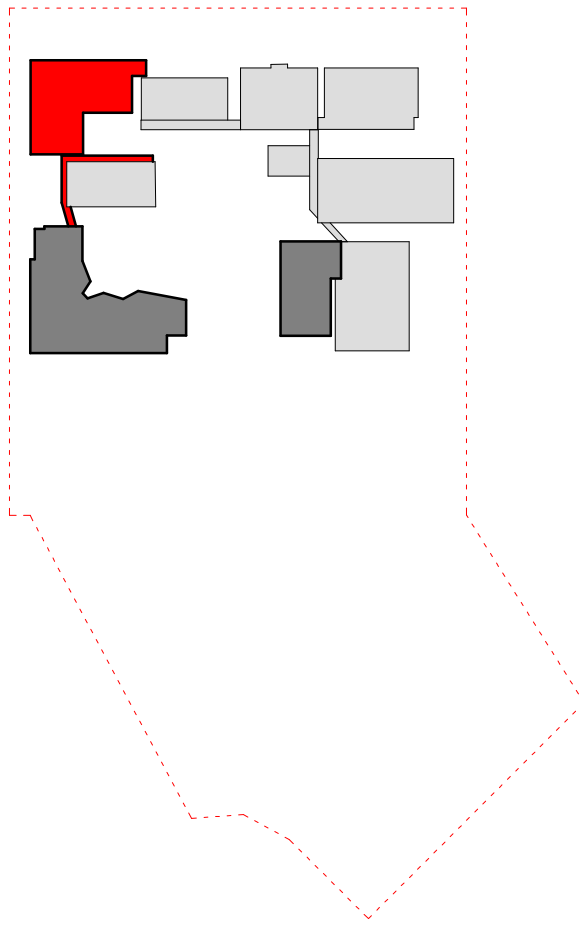


COLOR LEGEND

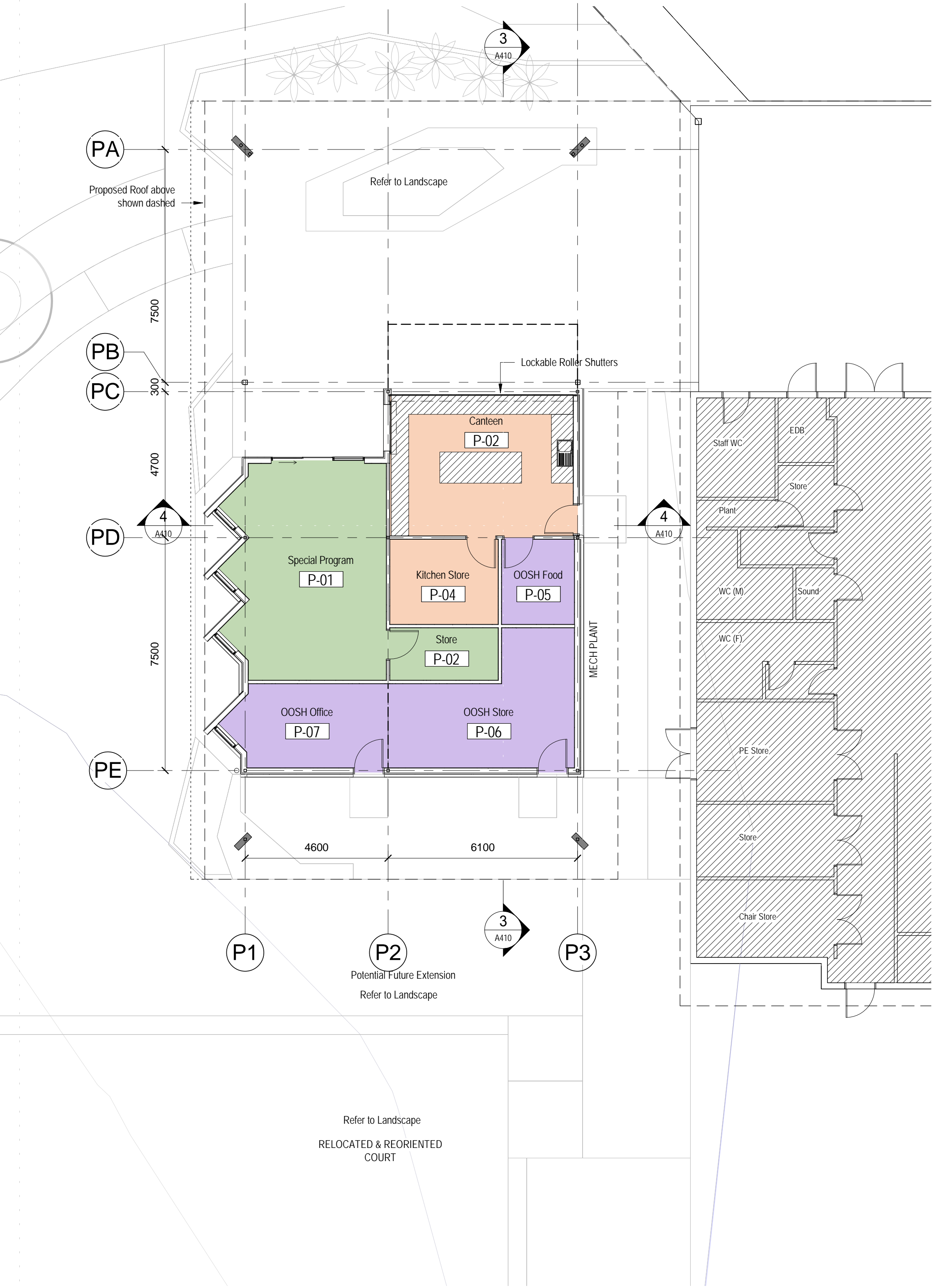
- Admin
- Amenities
- Circulation
- Services
- Staff
- Calculating...

GROSS FLOOR AREA CALCULATION

Homebase (Ground):	407 sqm
Homebase (Level 1):	405 sqm
Admin:	339 sqm
Canteen, Music & OOSH:	116 sqm
Total:	1,267 sqm



PRELIMINARY

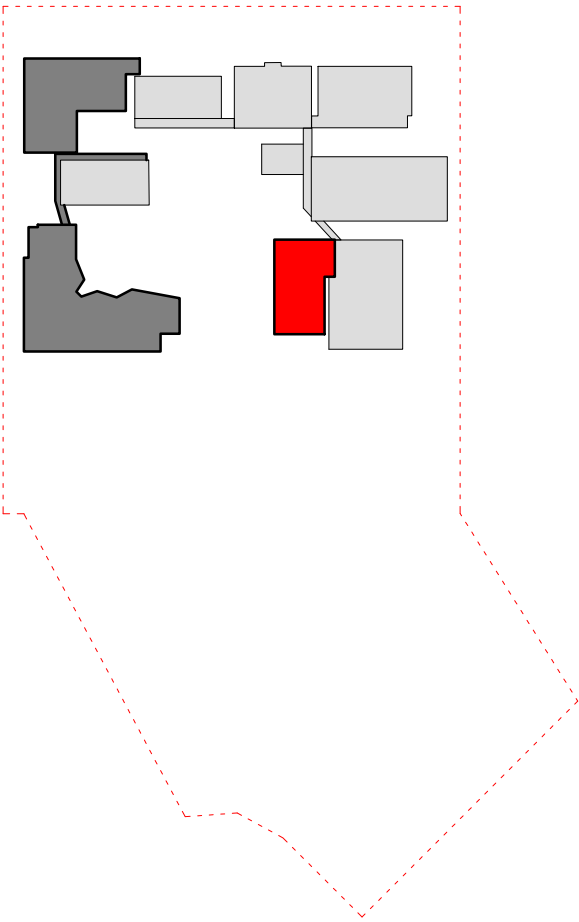


COLOR LEGEND

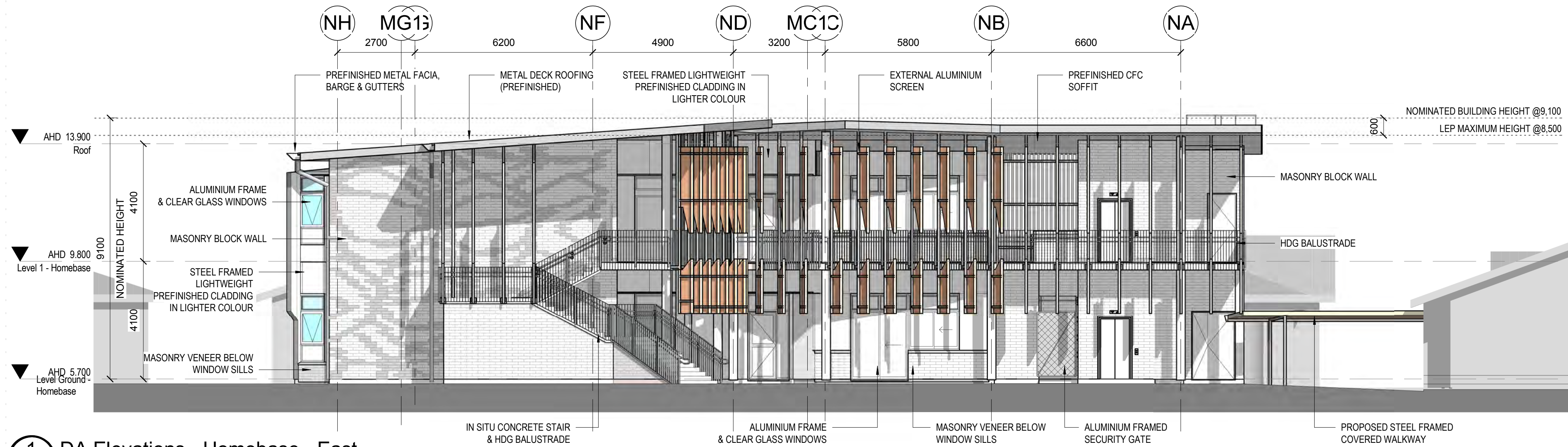
- Canteen
- OOSH
- Special program

GROSS FLOOR AREA CALCULATION

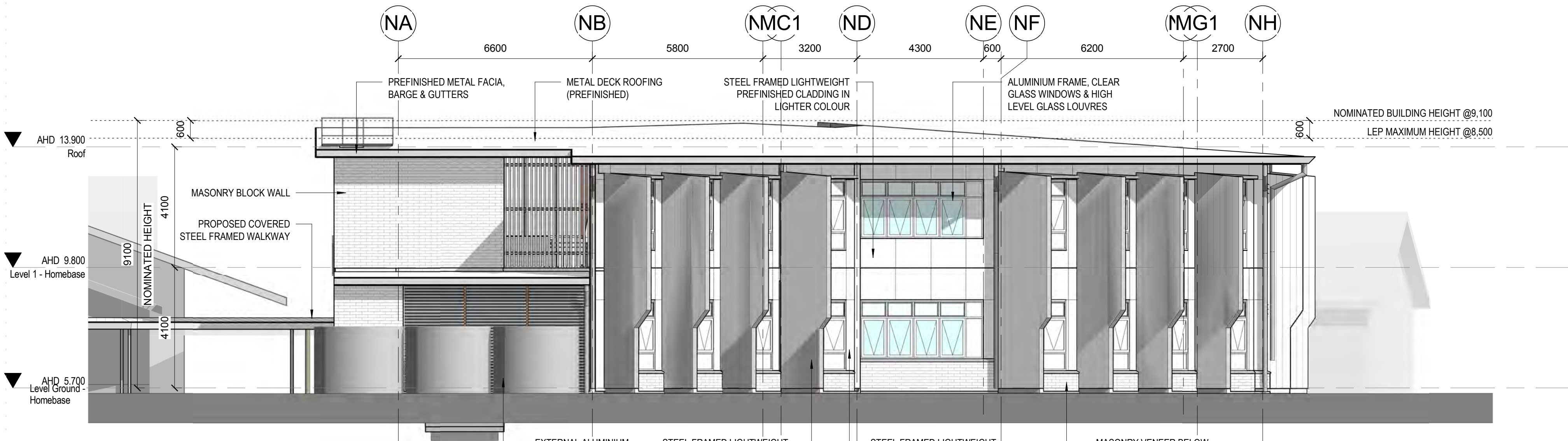
Homebase (Ground):	407 sqm
Homebase (Level 1):	405 sqm
Admin:	339 sqm
Canteen, Music & OOSH:	116 sqm
Total:	1,267 sqm



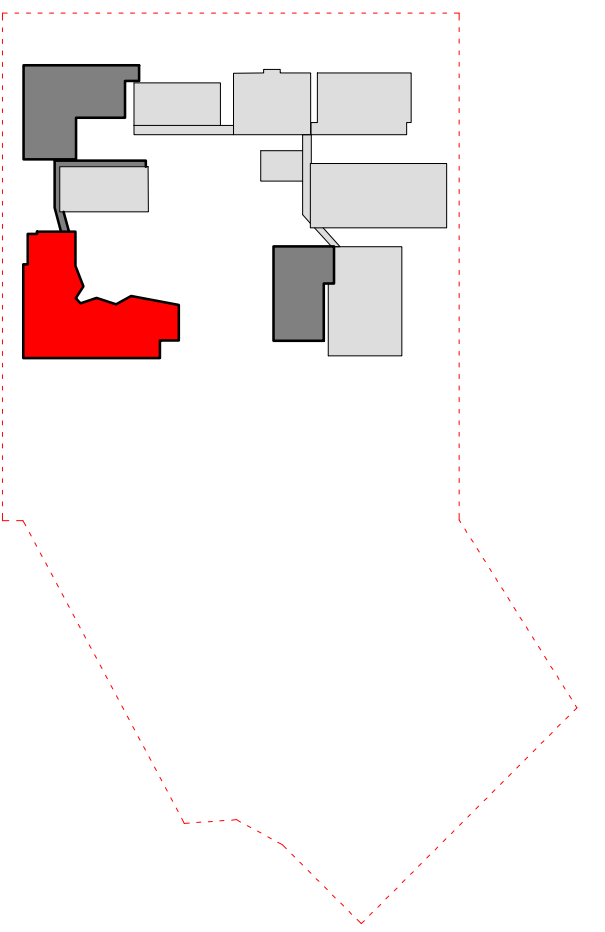
PRELIMINARY



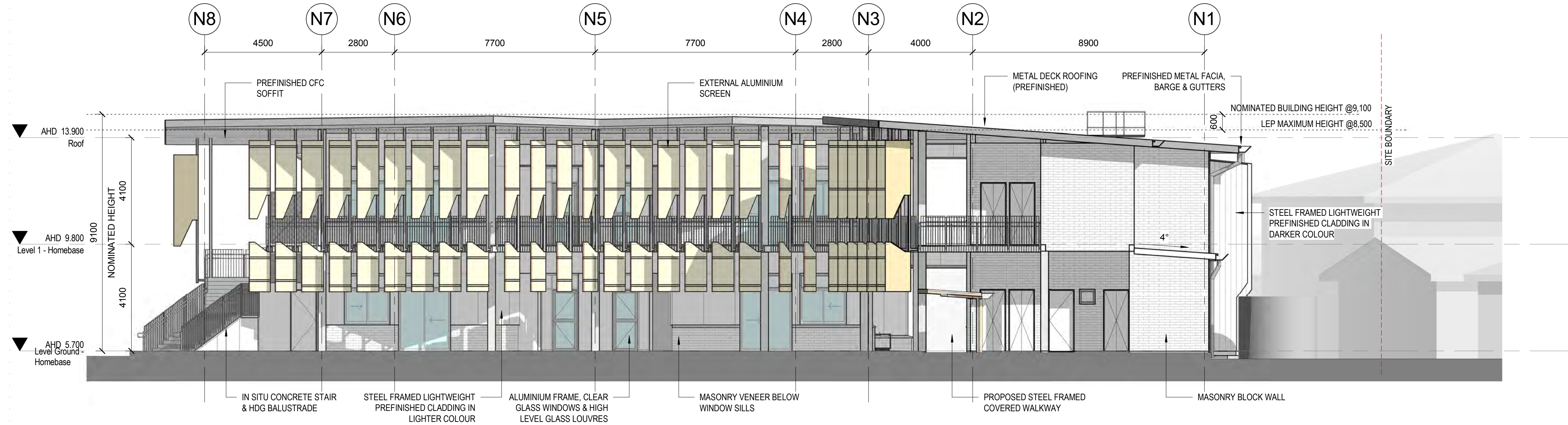
1 DA Elevations - Homebase - East
1:100



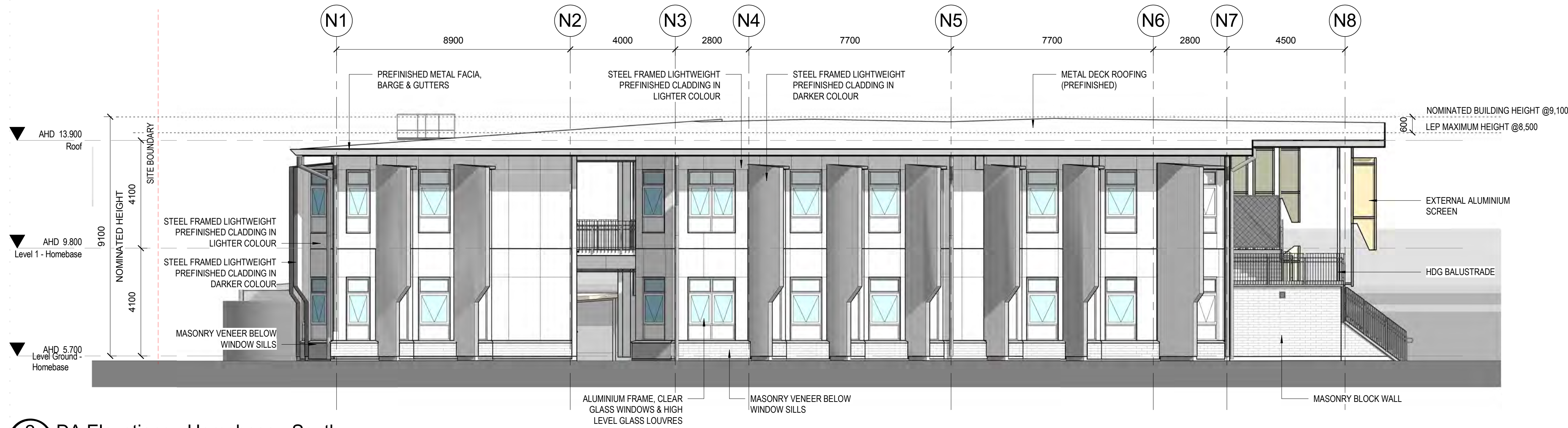
2 DA Elevations - Homebase - West
1:100



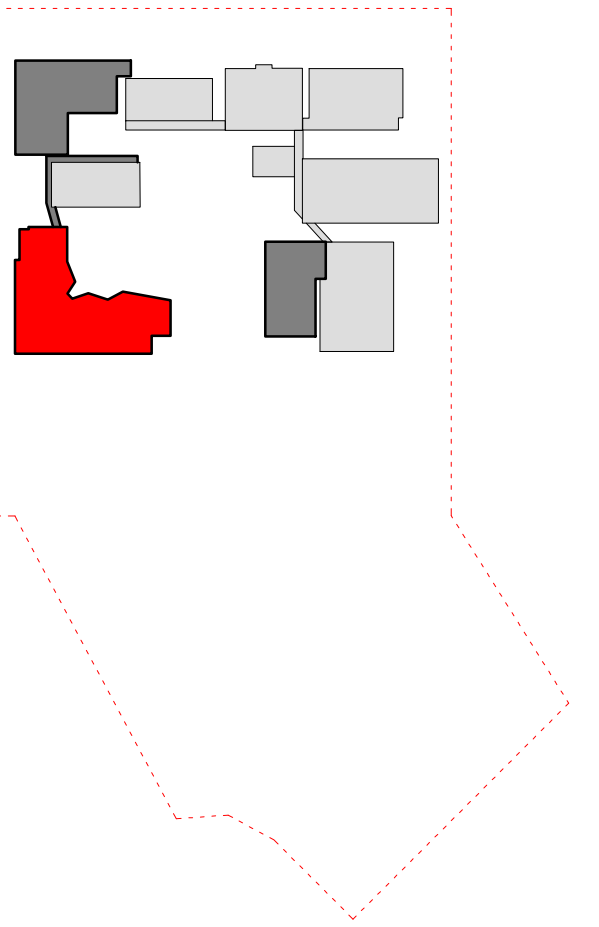
PRELIMINARY



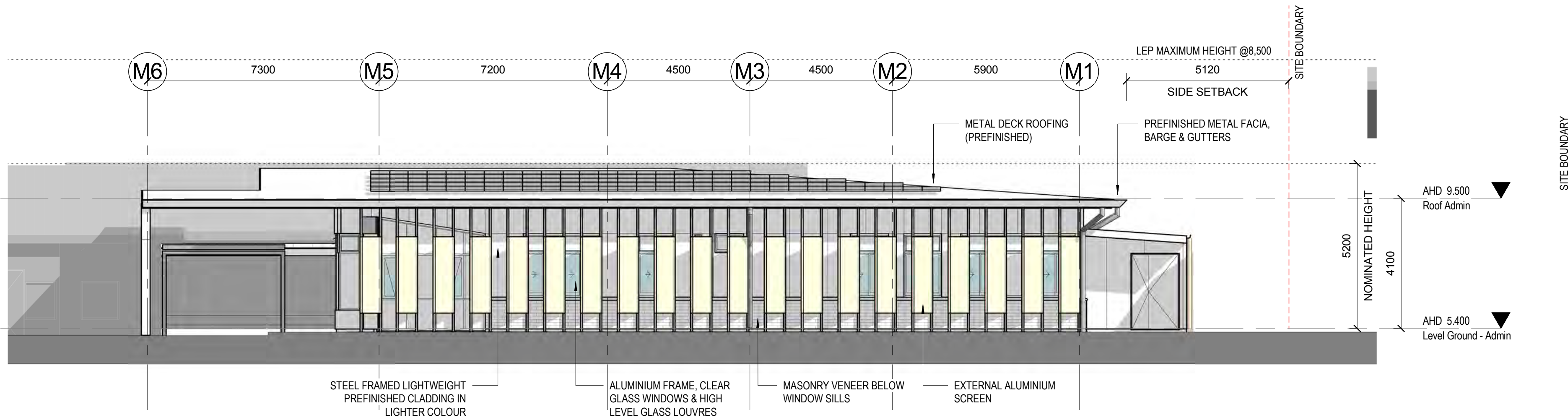
1 DA Elevations - Homebase - North
1:100



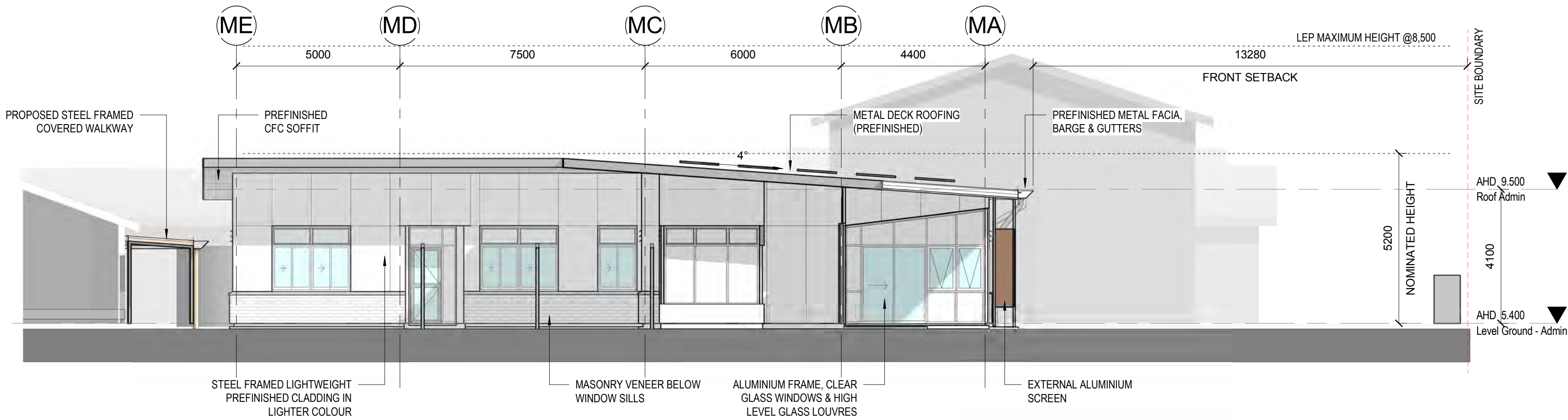
2 DA Elevations - Homebase - South
1:100



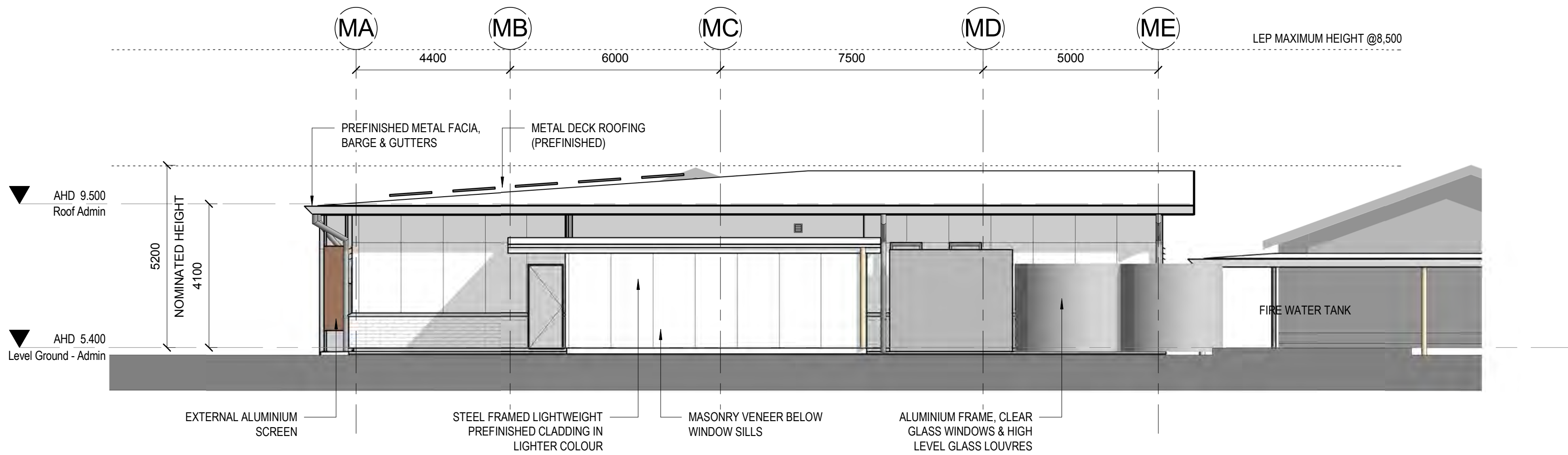
PRELIMINARY



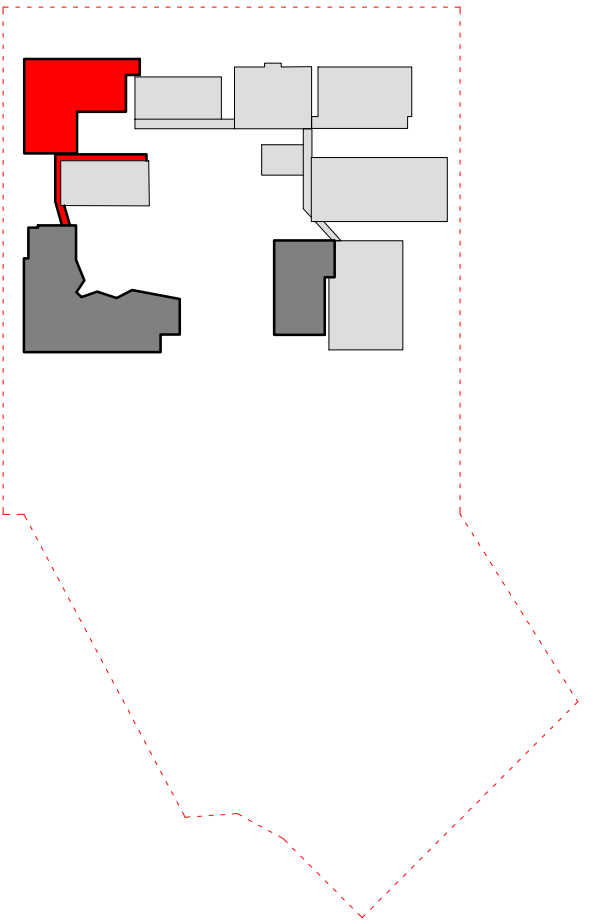
1 DA Elevations - Admin - North
1:100



2 DA Elevations - Admin - East
544 1:100

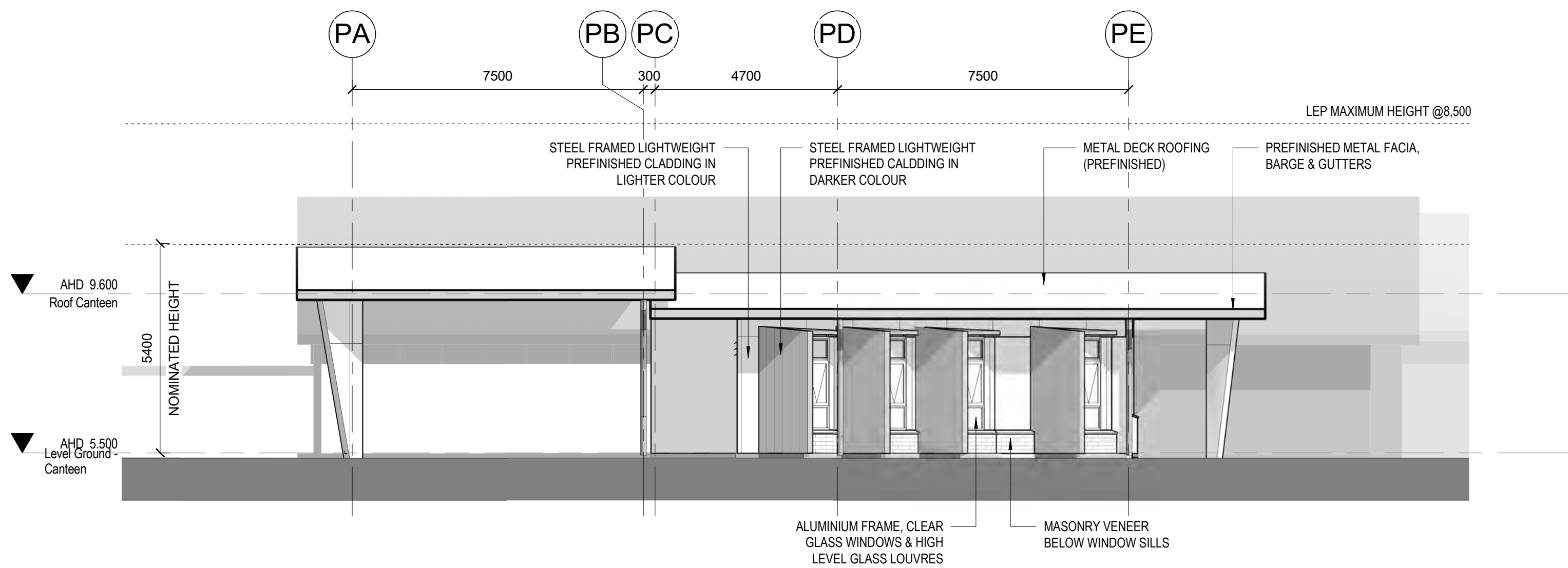


3 DA Elevations - Admin - West
1:100

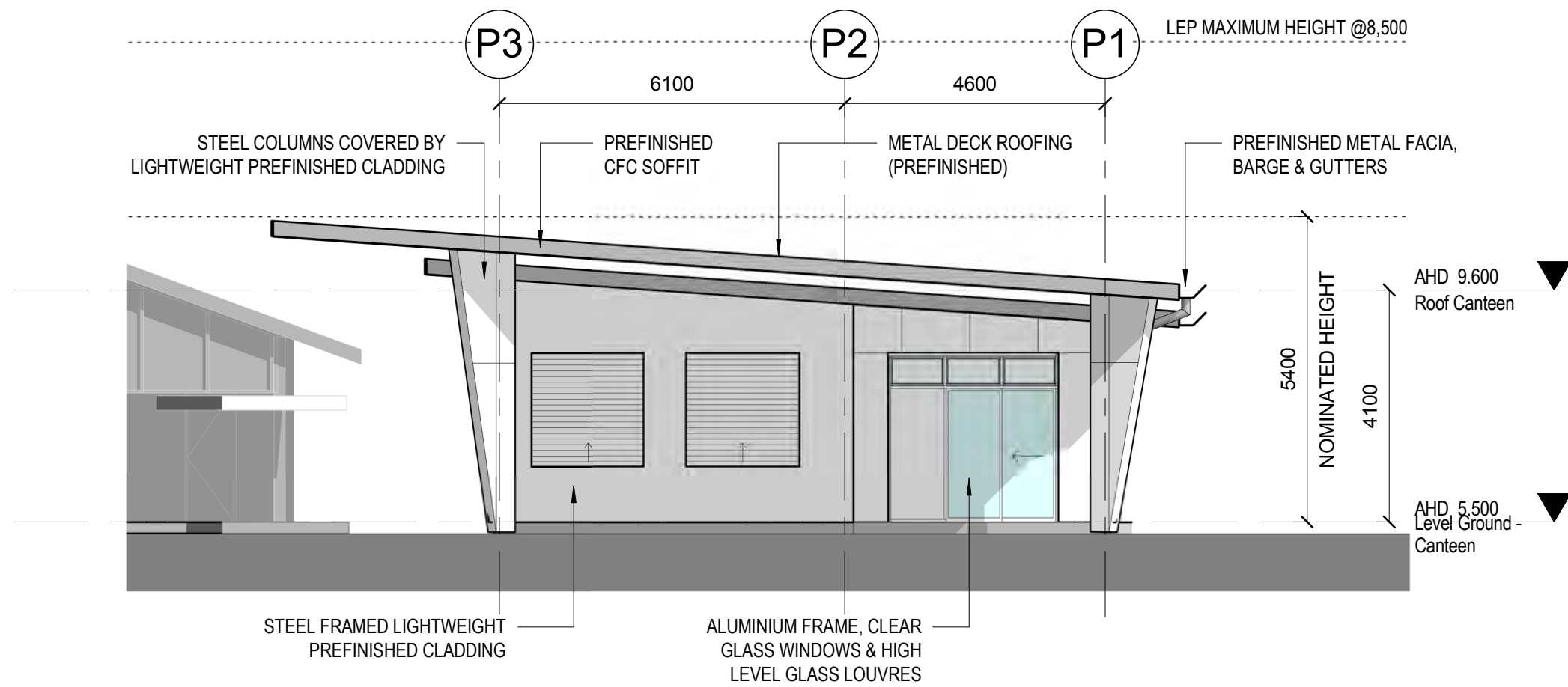


PRELIMINARY

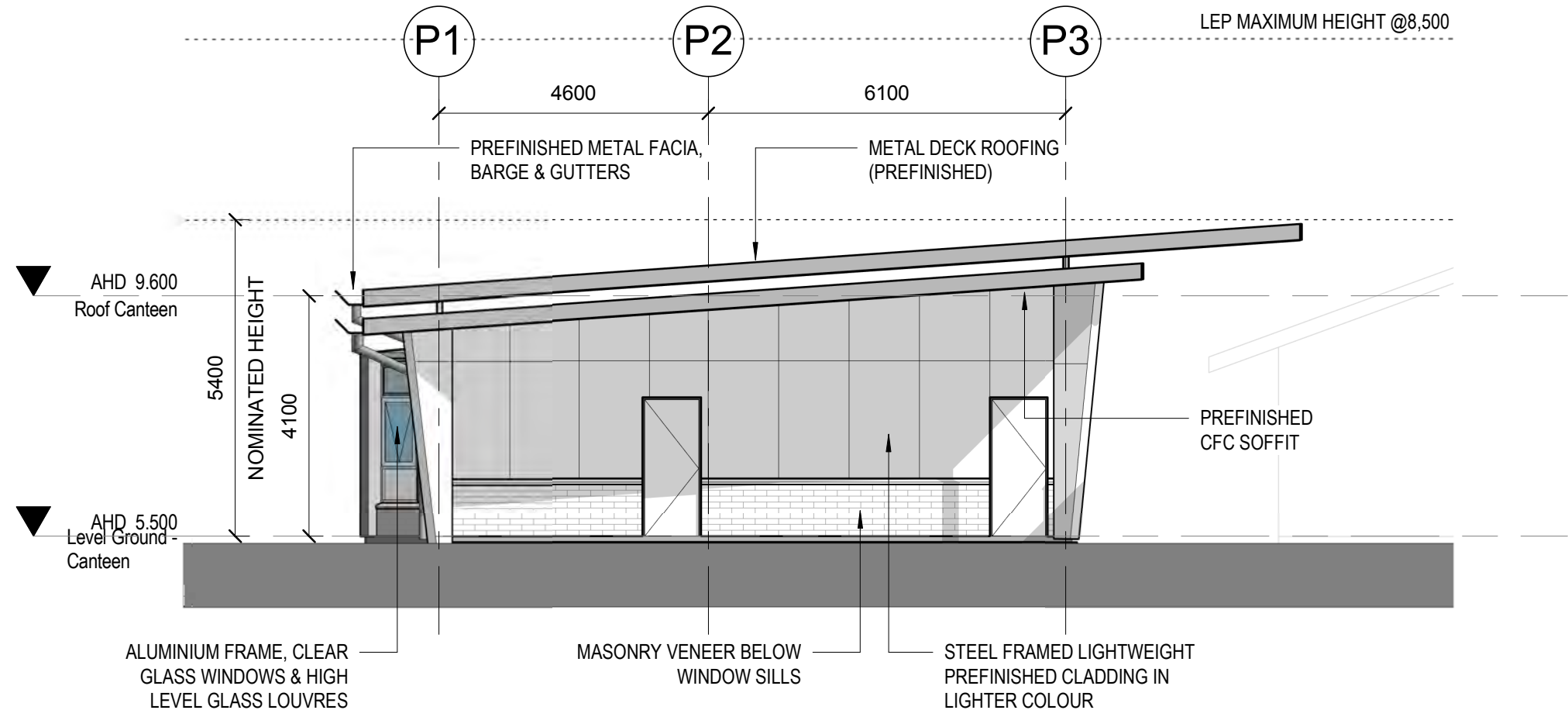
REV	DESCRIPTION	DATE	APPD
A	DA Issue	11/09/17	RA
B	DA RFI Response	25/10/17	RA



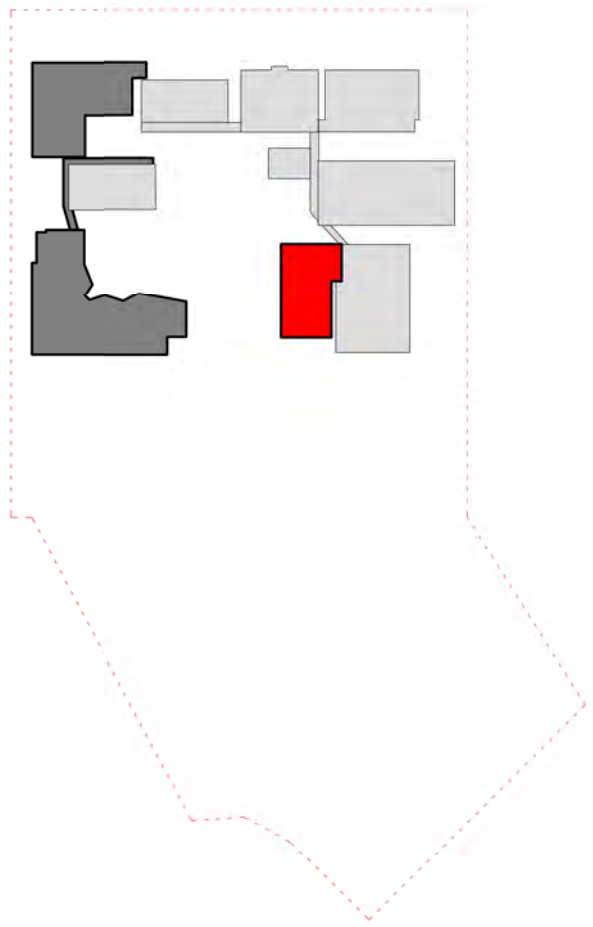
1 DA Elevations - Canteen - West
1:100



2 DA Elevations - Canteen - North
1:100

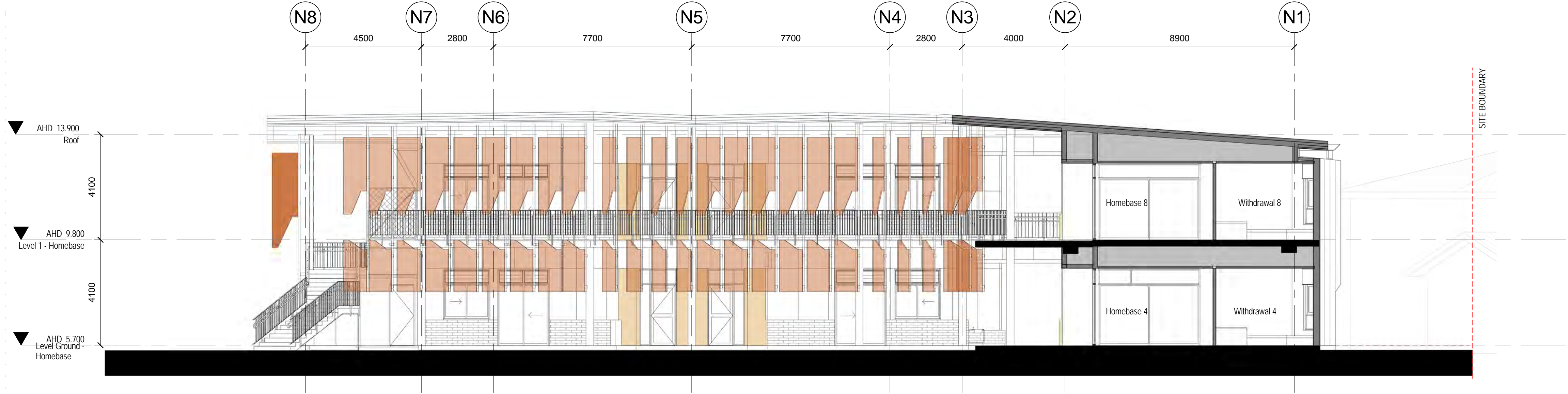


3 DA Elevations - Canteen - South
1:100

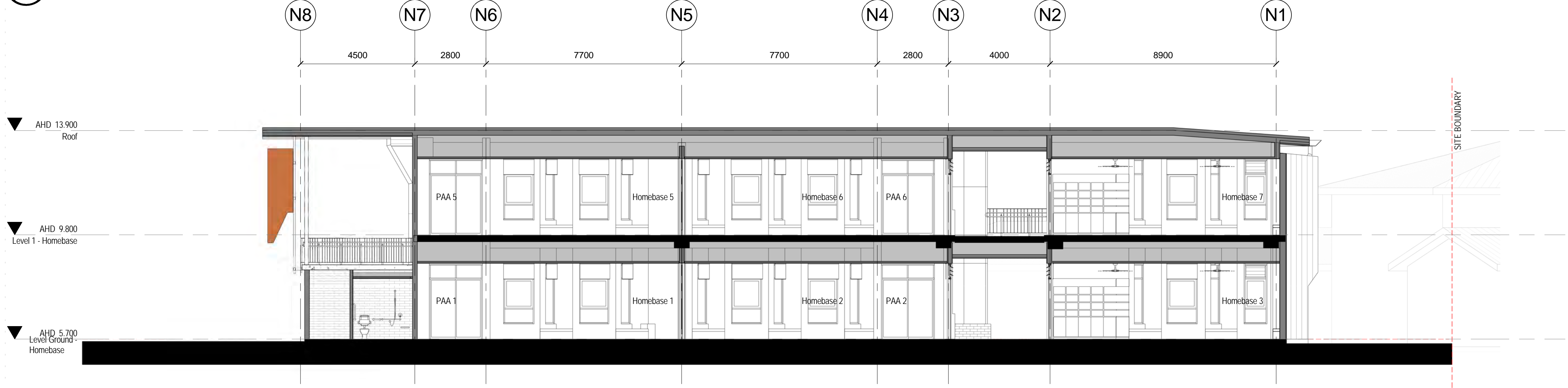


PRELIMINARY

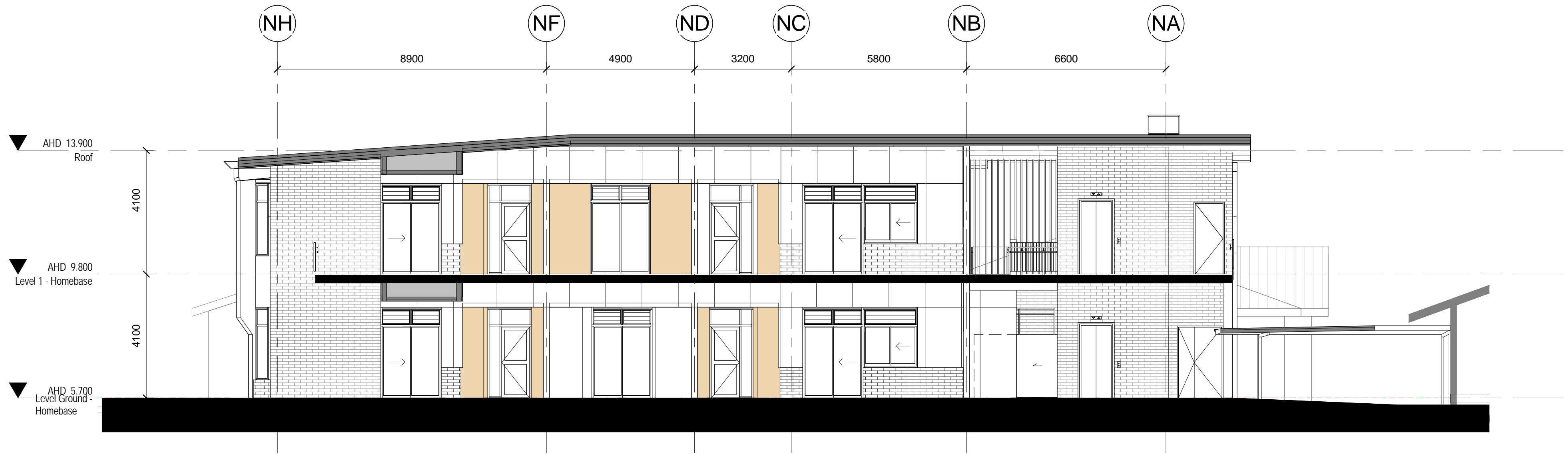
REV	DESCRIPTION	DATE	APPD
A	DA Issue	11/09/17	RA
B	DA RFI Response	25/10/17	RA



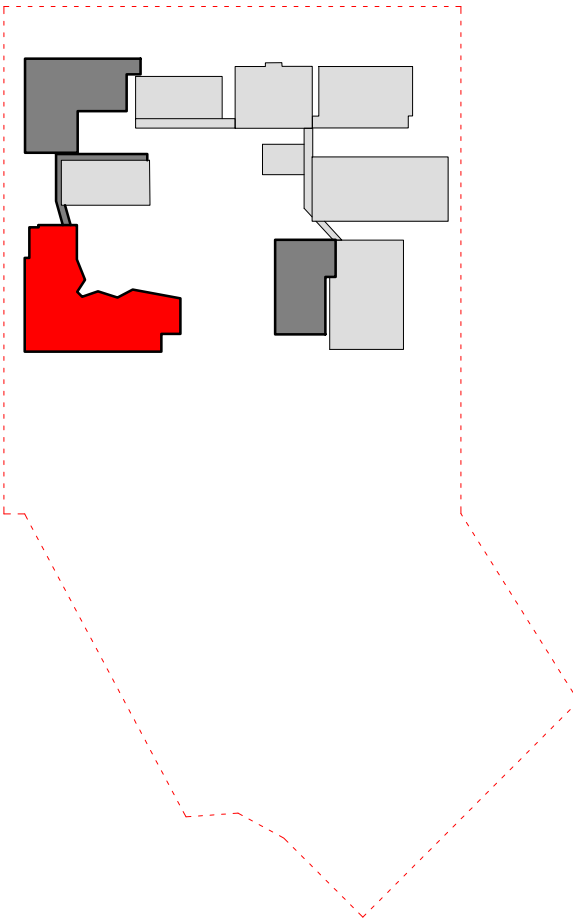
1 DA Sections - Homebase - Section 1
3000 1:100



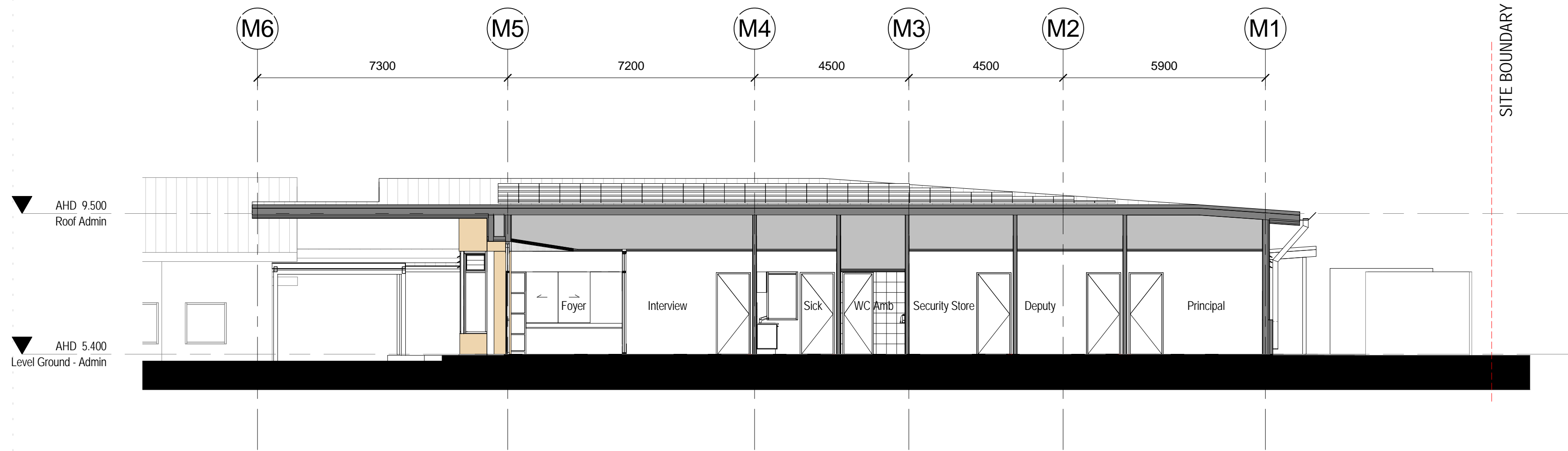
2 DA Sections - Homebase - Section 2
3000 1:100



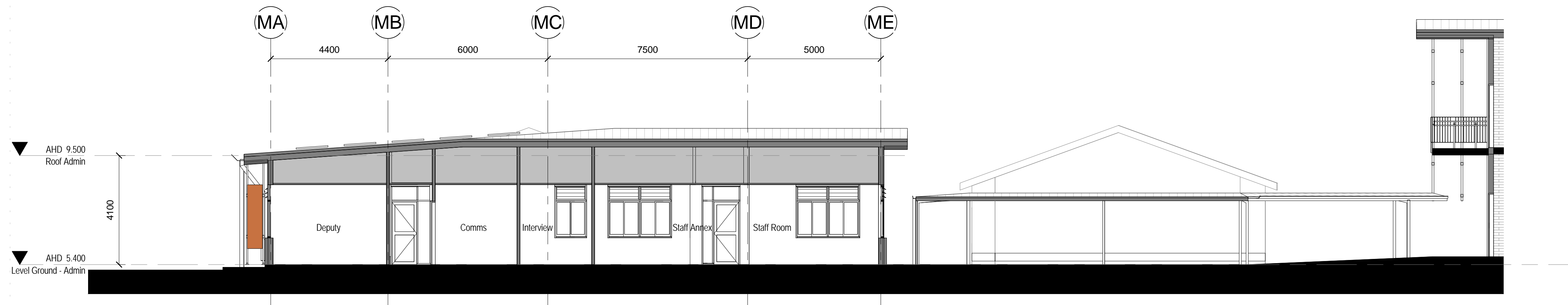
3 DA Sections - Homebase - Section 3
3000 1:100



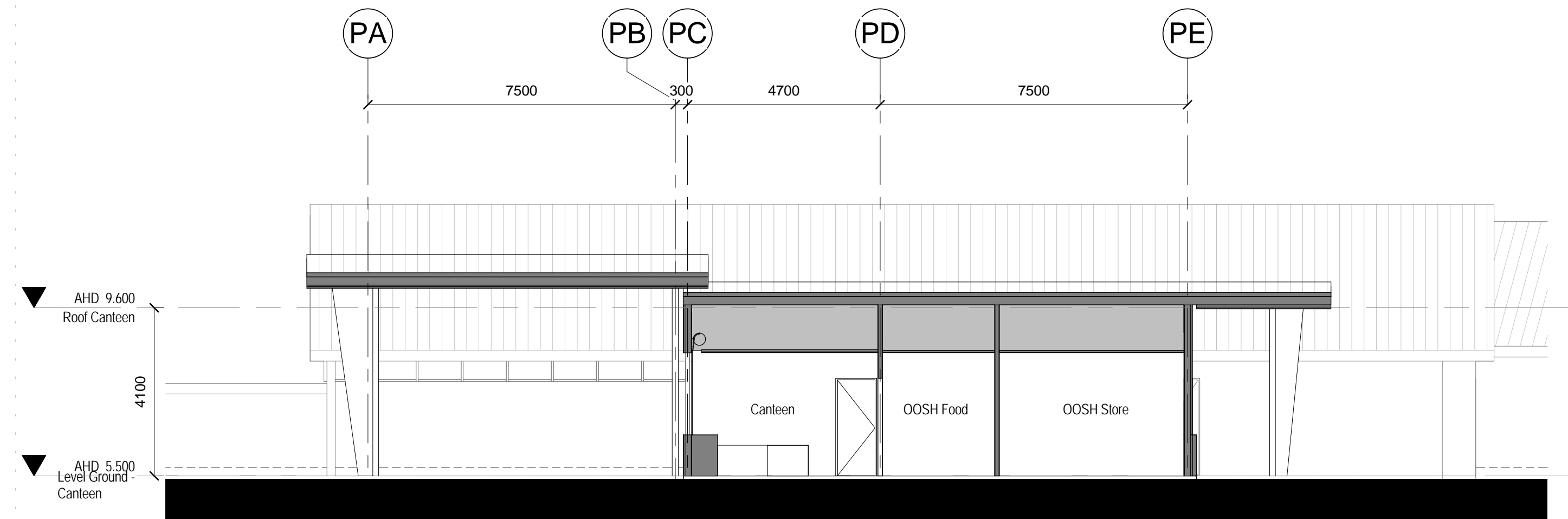
PRELIMINARY



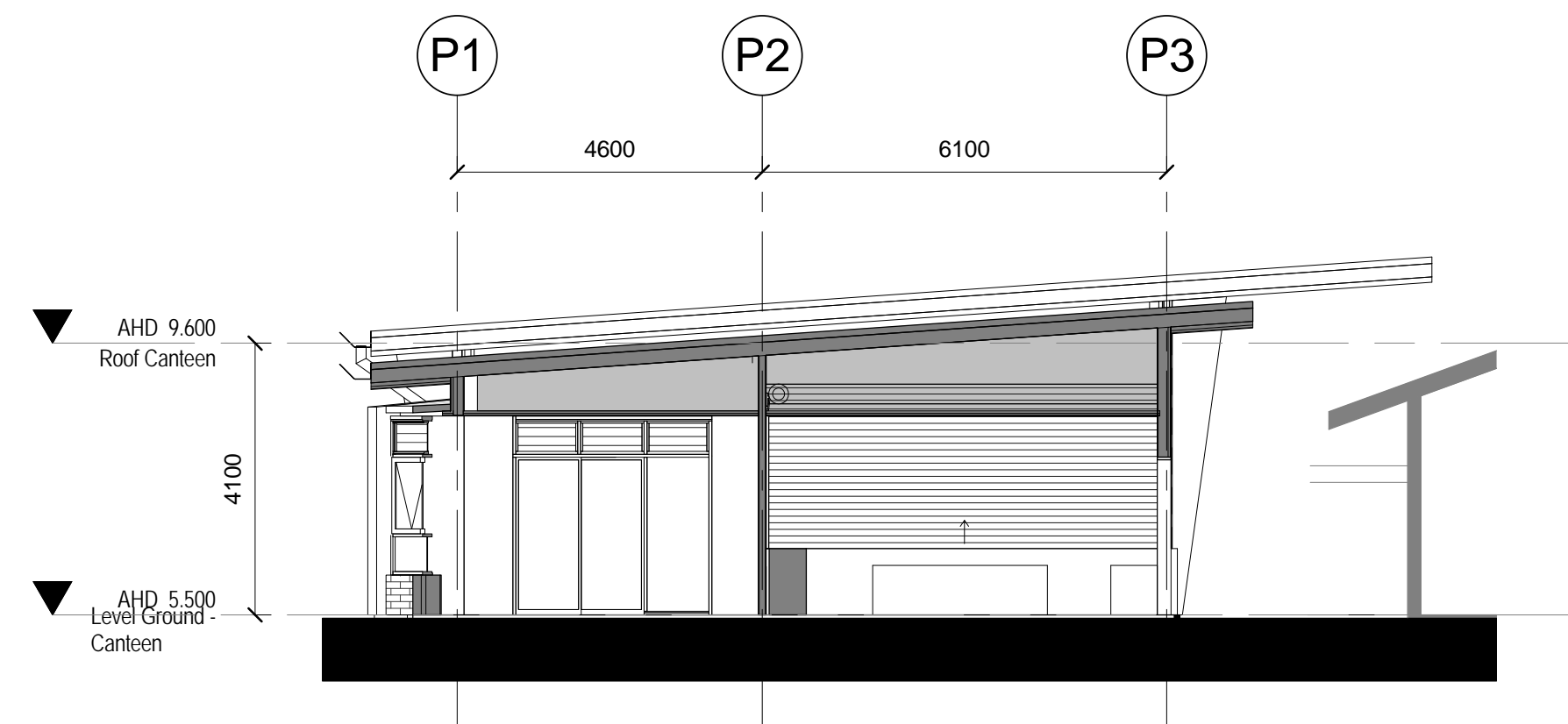
1 DA Sections - Admin - Section 1
3010 1:100



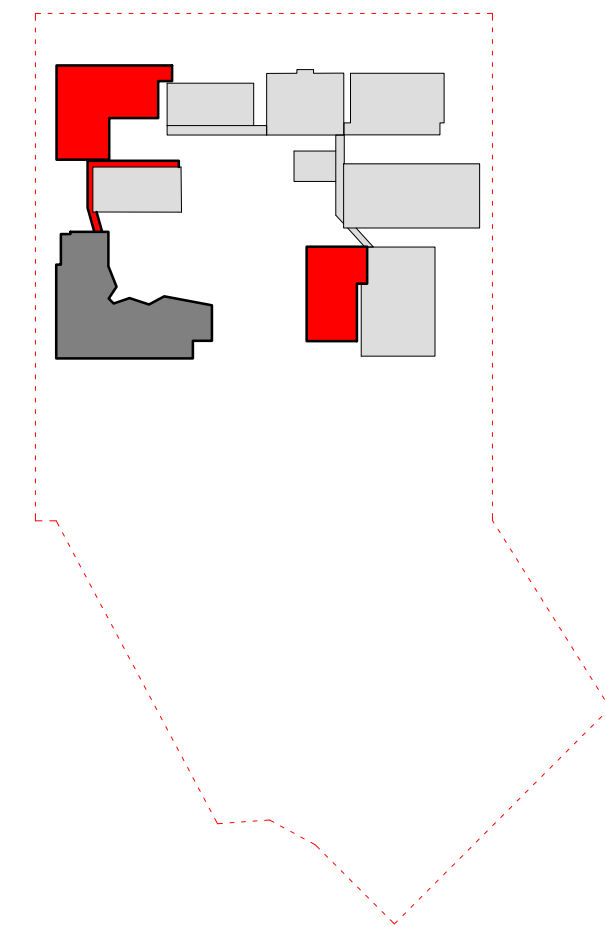
2 DA Sections - Admin - Section 2
3000 1:100



3 DA Sections - Canteen - Section 1
2020 1:100



4 DA Sections - Canteen - Section 2
2020 1:100



PRELIMINARY

Landscape Schematic Plan



LEGEND

- 1 New Entry and School Signage
- 2 Arrival Plaza
- 3 The Central Link (New Walkway)
- 4 Landscape Courtyard / Seating Area
- 5 Outdoor Learning Edge
- 6 Seating / Waiting Area / Canteen Spill Area
- 7 Make Good Landscape - Turf Area
- 8 Re-oriented Multi purpose Court
- 9 Existing Community Garden to be Retained
- 10 Existing Play Area to be Retained
- 11 Existing Informal Seating under Existing Trees to be Retained
- 12 Future Expansion Area
- 13 Existing Car Park
- Site Boundary
- Landscape Scope of Work

New Admin Landscape Plan

LEGEND

- 1 New Entry Walkway
 - 2 Arrival Plaza (Covered)
 - 3 Landscape Courtyard / Lawn
 - 4 Seating Wall
 - 5 New Covered Walkway
 - 6 Planting to screen off existing building
 - 7 The Central Link (New Walkway)
 - 8 Make Good Landscape - Turf
 - 9 Existing Community Garden to be Retained
 - 10 Existing Rainwater Tanks
- Site Boundary



New Homebase Landscape Plan

LEGEND

- 1 New Covered Walkway
 - 2 Planter (Clearance from bottom of building facade fin above to top of wall to be minimum 2.10M)
 - 3 Seating Wall (Clearance from bottom of building facade fin above to top of wall to be minimum 2.10M)
 - 4 The Central Link (New Walkway)
 - 5 Arrival Plaza to new Homebase with visual connection to central area
 - 6 Make Good Landscape - Turf
 - 7 Turf Swale
 - 8 Existing Playground to be Retained
 - 9 Existing Community Garden to be Reinstated
 - 10 Existing Informal Seating under Existing Trees to be Retained
- Site Boundary



New Canteen Landscape Plan

LEGEND

- 1 Seating / Waiting Area / Canteen Spill Area with connection to existing hall
- 2 Terraced Timber Platform for seating and small group gathering
- 3 Amenity Turf
- 4 Make Good Landscape - Turf
- 5 Future Expansion Area
- 6 Re-oriented Multi purpose Court
- 7 Turf Swale
- 8 The Central Link (New Walkway)
- 9 Existing Playground to be Retained
- 10 Existing Covered Walkway to be Retained
- 11 Existing Informal Seating under Existing Trees to be Retained



Material Palette - Hardscape

PAVING

INDICATIVE ONLY

FULL DEPTH COLOURED CONCRETE
Colour: CCS Smokey Blue
Finish: Broom Finish

INDICATIVE ONLY

FULL DEPTH COLOURED CONCRETE
Colour: CCS Citrus Cream
Finish: Broom Finish

INDICATIVE ONLY

FULL DEPTH COLOURED CONCRETE
Colour: CCS Driftwood
Finish: Broom Finish

INDICATIVE ONLY

FULL DEPTH COLOURED CONCRETE
Colour: CCS Kakadu (FOR GAMES COURT)
Finish; Broom Finish

TACTILE INDICATOR
300mm x 300mm x 40mm
Type: Concrete Paver
Colour: CCS Charcoal / CCS Ivory
Supplier: Chelmstone or equivalent

CONCRETE EDGE
150mm x 150mm

SEATING WALL

SANDSTONE SEATING WALL
A Grade Sandstone Blocks
Sandstone Hub or equivalent

IN SITU CONCRETE SEATING WALL
Plain Grey Concrete

INFORMAL SEATING - TIMBER
Timber: 135mm x 32mm Blackbutt F23 -
Stained with 2 coats of Cutek 'Extreme'

FURNITURE

TRASH BIN
600mm (W) x 1240mm (H) x 605mm (D) -
Cladding: Black Powder Coated Steel,
Chute and Cover: Black Powder Coated Steel
Slats: Select Timber Hardwood
Supplier: MOS or equivalent

General Note:

Selection & images are for the purpose of indicating the Landscape Design Intent only. Final selections will be equal to or similar to those nominated.

Material Palette - Softscape

TREES



Banksia integrifolia
COAST BANKSIA
4m max.H x 2.5m spread



Lophostemon confertus
BRUSH BOX
5m max.H x 3m spread



Syncarpia glomulifera
TURPENTINE TREE
5m max.H x 3m spread

SHRUBS



Banksia spinulosa 'Birthday Candles'
200mm min. pot size
4/sqm



Dianella caerulea
FLAX LILY
140mm min. pot size
4/sqm



Doryanthes excelsa
GYMEA LILY
200mm min. pot size
Used as accent plant



Lomandra longifolia
MAT-RUSH
140mm min. pot size
4/sqm



Syzygium australe 'Tiny Trev'
DWARF LILLYPILLY
140mm min. pot size
4/sqm

GROUND COVERS



Juniperus conferta
SHORE JUNIPER
140mm min. pot size
4/sqm



Myoporum parvifolium
Creeping Myoporum
140mm min. pot size
4/sqm

General Note:

Selection & images are for the purpose of indicating the Landscape Design Intent only. Final selections will be equal to or similar to those nominated.

Planting Schedule

									Low	Medium	Shade	Windbreak	Screen	Foliage Contrast	Decorative Bark	Soil Binder	Insect / Bird Attracting	Large Scale Planting	Entrance	Street Frontage	Assembly	Passive	Active	Boundary
Botanical Name	Common Name	Form	Flowering Period	Mature Height	Hardiness	Growth Rate	Soil Type	Light Requirements	Allergy Rating	Key Function								Ideal Zones of Use						
TREES																								
Banksia integrifolia	Coast Banksia	Medium evergreen tree	January to June	15-20 m	Very hardy	Moderately vigorous, long lived	San to heavy soils, well drained	Full sun	<div></div>	<div></div>	<div></div>	<div></div>	<div></div>	<div></div>	<div></div>	<div></div>	<div></div>	<div></div>	<div></div>	<div></div>	<div></div>	<div></div>	<div></div>	<div></div>
Lophostemon confertus	Brush Box	Medium evergreen tree	Spring, Early Summer	20m	Hardy	Very vigorous, long lived	Moderatley to hgly fertile	Full sun to deep shade	<div></div>	<div></div>	<div></div>	<div></div>	<div></div>	<div></div>	<div></div>	<div></div>	<div></div>	<div></div>	<div></div>	<div></div>	<div></div>	<div></div>	<div></div>	<div></div>
Syncarpia glomulifera	Turpentine Tree	Medium, evergreen tree	Spring	20m	Tolerates short drought	Moderate	Heavier Soils	Full sun, part shade	<div></div>	<div></div>	<div></div>	<div></div>	<div></div>	<div></div>	<div></div>	<div></div>	<div></div>	<div></div>	<div></div>	<div></div>	<div></div>	<div></div>	<div></div>	<div></div>

									Low	Medium	Border	Groundcover	Screen	Foliage Contrast	Specimen Plant	Soil Binder	Insect / Bird Attracting	Mass Planting	Colour / Habitat Contrast	Entrance	Street Frontage	Assembly	Passive	Active	Boundary	
Botanical name	Common Name	Form	Flowering Period	Mature Height	Hardiness	Growth Rate	Soil Type	Light Requirements	Allergy Rating	Key Function										Ideal Zones of Use						
SHRUBS																										
Banksia spinulosa	Hairpin Banksia	Medium shrub	April to July	3 m	Hardy	Moderate, long lived	Sandy loam / clay loam, well drained	Full sun, part shade	Green				Purple								Orange	Orange	Orange	Orange	Orange	Orange
Dianella caerulea	Flax Lily	Tufted shrub	October to February	600 mm	Hardy once established	Moderate	Sandy	Full sun, part shade	Green		Purple							Purple			Orange	Orange	Orange	Orange	Orange	Orange
Doryanthes excelsa	Gynea Lily	Large, tufted shrub	August to November	2 m	Hardy	Show to moderate	Deep sandy	Full sun, shade	Green			Purple			Purple						Orange	Orange	Orange	Orange	Orange	Orange
Lomandra longifolia	Spiny-headed, Mat-rush	Tufted shrub	August to December	800 mm	Very hardy	Fast	Adaptable	Adaptable		Green								Purple			Orange	Orange	Orange	Orange	Orange	Orange
Syzygium australe 'Tiny Trev'	Dwarf Lillypilly	Small shrub	Spring to mid summer	600 mm	Salt tolerant, protect from harsh winds	Moderately vigorous	Prefers reliably moist loams, but adaptable	Full sun	Green				Purple		Purple						Orange	Orange	Orange	Orange	Orange	Orange
GROUND COVERS AND TURF																										
Juniperus conferta	Shore Jupiter	Evergreen, coniferous shrub	N/A	300 mm	hardy front line salt and wind tolerant	Moderate to vigorous, long lived	Sandy clay soils, moderate drainage	Full sun		Green		Purple									Orange		Orange	Orange		
Myoporum parvifolium	Creeping myoporum	Spreading mat	N/A	300 mm	Hardy	Moderate to vigorous, long lived	Sandy loam added organic matter	Full sun, light shade	Green		Purple	Purple						Purple	Purple		Orange	Orange	Orange	Orange	Orange	Orange